

EAMES HOUSE

Case Study House No. 8

The Case Study Program

Around the early 1940s, John Entenza, the publisher of “Arts & Architecture magazine” spearheaded the case study program. In a challenge to the architectural community, the magazine announced that it would be the client for a series of homes designed to express man’s life in the modern world. These houses were to be constructed and furnished using materials and techniques derived from experiences of the 2nd World War. Each home had to be for a real or hypothetical client, taking into consideration of the particular housing needs.

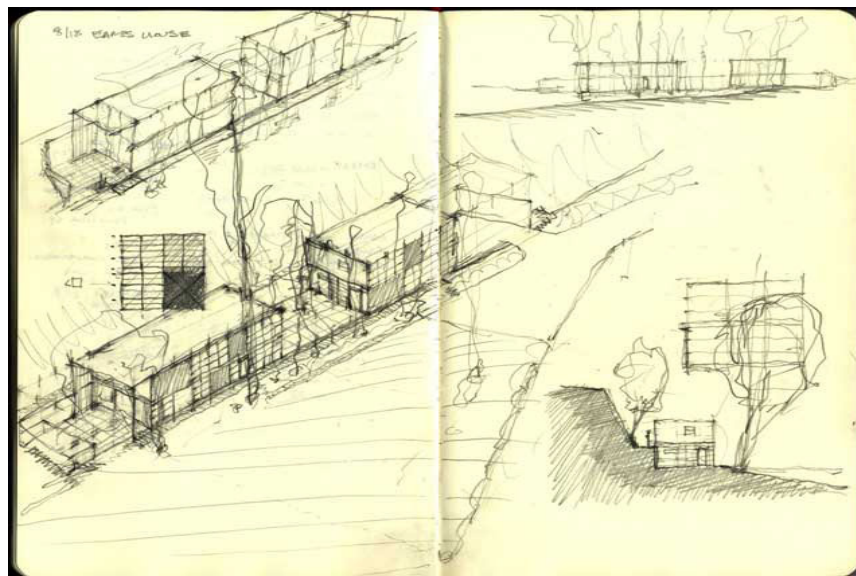
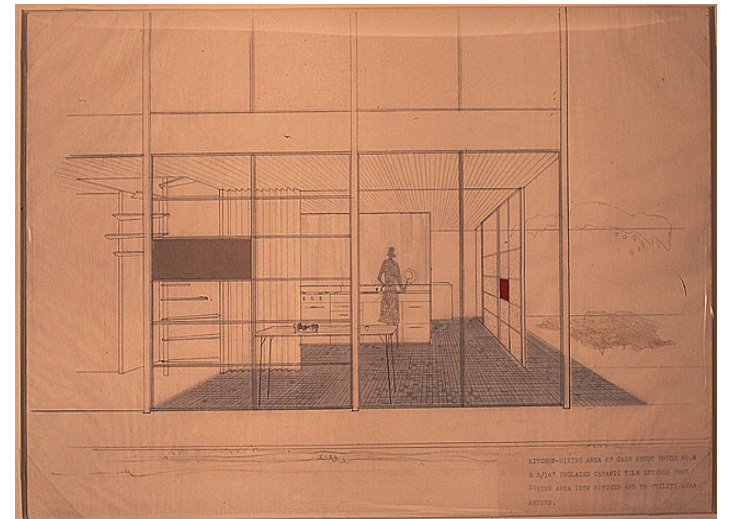
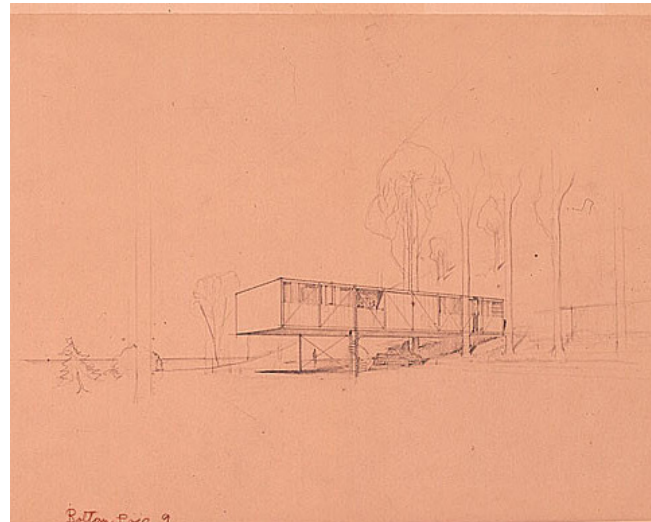
Charles and Ray Eames house was just one of roughly 2 dozen homes built in this program.



Ray and Charles Eames

Charles and Ray proposed that the house they designed would be for a married couple whose children no longer live with them. This couple works in design & graphic art.

They wanted to create a home that would make no demands for itself, & would serve as a background for as Charles said “life in work”.



Case House Study No. 8

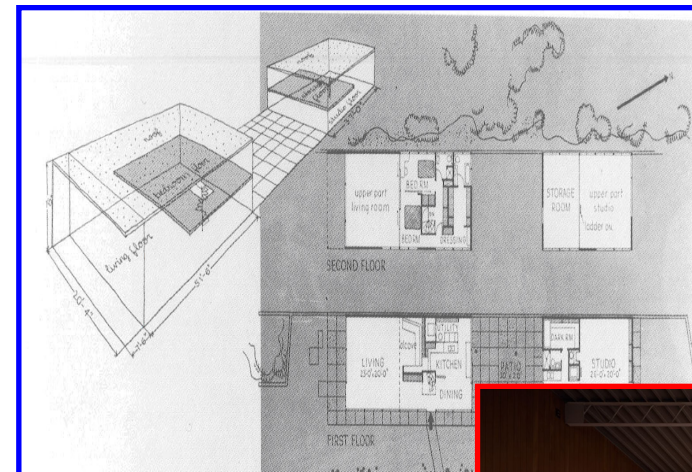
The Eames house gained such success by its spatially pleasant modern residence. Charles & Ray designed this home in 1945 and constructed case study homes that had to focus on the use of new materials and technologies during WWII.

The intention was for the house to be made of prefabricated materials that would not interrupt the site, be simple to construct and exhibit a modern style.



The site is a flat parcel on an otherwise steep land that creates a retaining wall to the west. The response to this condition was a concrete retaining wall that ties together the 2 boxes adjacently through sharing a

common space (the courtyard) for the client to experience the landscape. The importance given to light in the design, with the exterior arranged in the particular way, this design can be tied to traditional Japanese household influences.



Eames House Plans & Axon

Eames House Interior





The Eames Foundation

The Eames House, now a historic landmark, is an iconographic structure visited by people worldwide. The Eames House represented an attempt to state an idea rather than a fixed architectural pattern. In 2004, Charles' daughter, Lucia Eames, created a non-profit organization called the Eames Foundation that works to preserve and protect the Eames House & provide educational experiences that celebrate the creative legacy of Ray & Charles Eames.